

# New Measure Process Review



**CALIFORNIA**

TECHNICAL FORUM

**AYAD AL-SHAIKH  
JENNIFER HOLMES  
MARCH 12, 2020**

# Agenda

2

- Process review (10 min)
- Forms
  - Measure Submission Form, Att C (30 min)
  - Measure Screening Form, Att D (5 min)
  - Measure Development/Update Plan, Att E (5 min)
- Website & Resources (20 min)

# New Measure Process

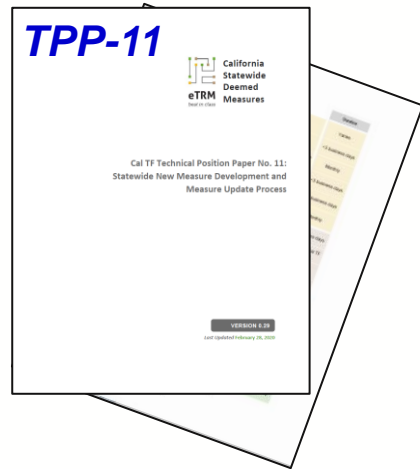
3



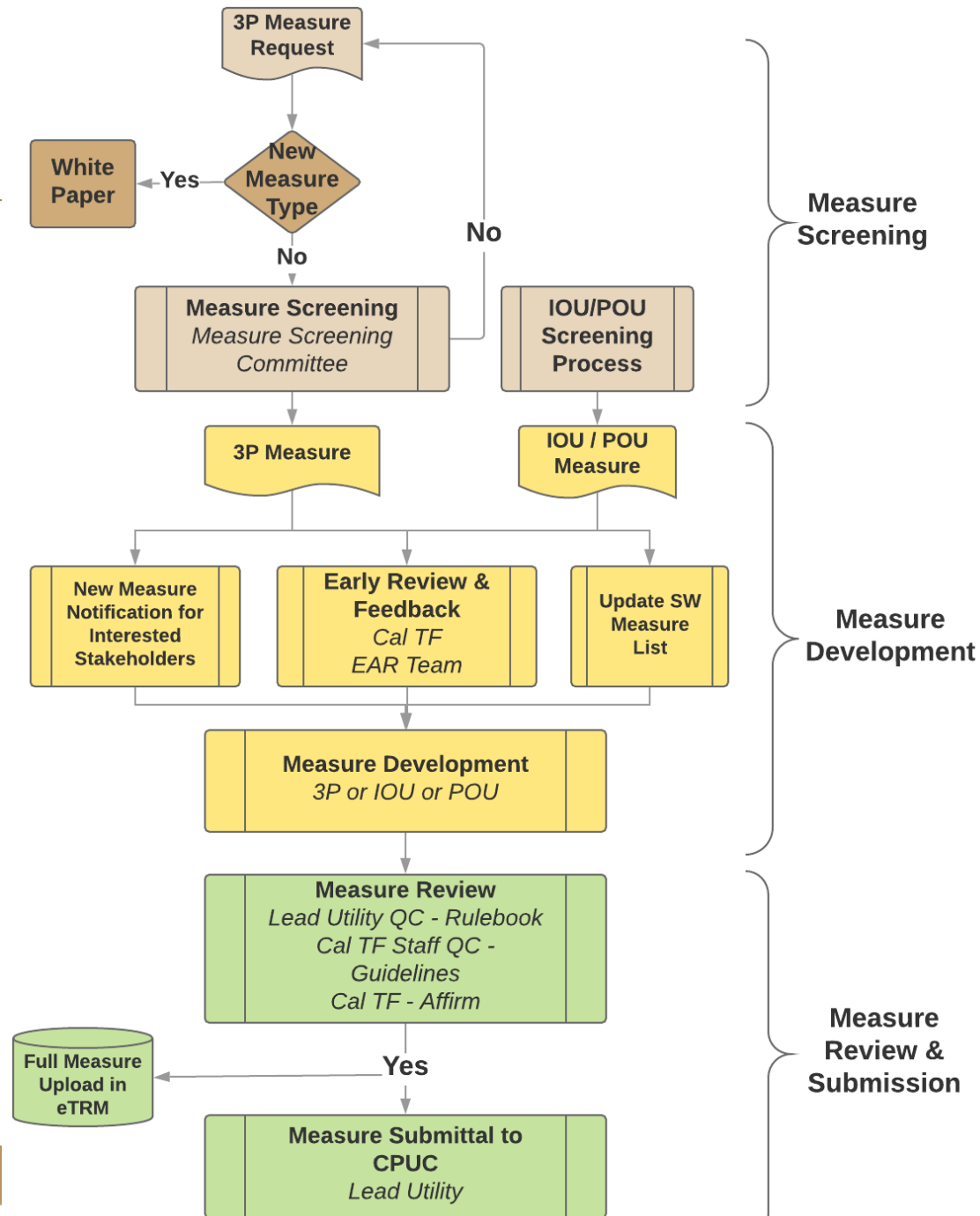
- **Goals:**

- Understand that a new process exists to get energy efficiency measures into utility programs for Third Parties (ie, implementer or manufacturer)
- Understand that input data is clearly defined

# Process Flow



[www.caltf.org/tools](http://www.caltf.org/tools)  
(scroll down to  
“Technical Position  
Papers (TPPs)”)



# Measure Development Resources & Requirements

5

- Statewide Deemed Measure Template:
  - ★ Statewide Measure Characterization
  - ★ Statewide Data Specification
    - CPUC Four Ex Ante Tables (IOUs to develop)
- ★ Measure Development & QA/QC Guidelines
- ★ Statewide Deemed Rulebook
- ★ Statewide Measure Style Guide
- California eTRM: [www.caetrm.com](http://www.caetrm.com)
- ★ Can be downloaded from [www.CalTF.org/tools](http://www.CalTF.org/tools)



# Measure Submission Form: Measure Description



6

- Technology Summary
- Measure Case Description: Describe proposed efficient technology specification
- Base Case Description: Describe baseline technology specification
  - What is the customer currently using?
- Code Requirements: Applicable state and federal codes or industry standard practice (ISP) information
  - Title 20/24, dispositions, etc.



# Measure Submission Form: Supporting Documents



7

- Resources: That could inform measure values for the requested measure?
  - Any Workpapers, DEER measures, Emerging Technology studies, or use of this technology previously in a Custom project, etc.
- Market Potential Evaluation: How much interest will there be and from whom?
  - Target Markets
  - Annual Uptake / Demand
  - Anticipated Savings
  - Competing Technologies
  - Barriers to Adoption
  - Include any applicable supporting resources (i.e. Potential & Goals study and/or similar studies/analysis)



# Measure Submission Form: Measure Considerations



8

- Is the given technology restricted to a **single manufacturer**?
- Describe typical manufacturers **warranty** on product including duration?
- Is the given technology **mass produced** and ready for mass market distribution?
- **Potential impacts** to other measures
  - Could this impact currently approved measures? If so, how?
  - Will this/these measure(s) replace an existing measure(s)?
- **Non-Energy Impacts** (Health, Water, Environmental)
- Any health, savings or performance **risks** identified?
- **Data Collection** Requirements?
- Are you replacing one gas or electric fuel with the other?





# Measure Submission Form: Measure Values



9

- Savings Unit of Measure (normalizing unit)
- Est. Annual Savings Electric (kWh/yr)
- Est. Demand Reduction (kW)
- Est. Annual Savings Gas (Therms/yr)
- Net-to-Gross Ratio
- Load Shape
- Est. Full Measure Cost
- Est. Incremental Measure Cost
- Effective Useful Life
- **Goal:** Estimate TRC (attach input/output files)
  - Total Resource Cost (TRC) = Measurement of cost-effectiveness
  - Looking for “Greater than 1.0”



# Measure Submission Form: Measure Delivery / Categorization

10

- Proposed Delivery Type(s)
- Projected Rebate
- Categorize your measure:
  - Applicable Sector & Sub Sector(s)
  - Use Category & Sub-Use Category
  - Technology Group & Technology Type
- Proposed Measure Application Type
- Eligible Climate Zones
  - List all applicable CA climate zones for which this measure may apply
  - **REMEMBER:** Statewide!
- Eligible DEER Building Types and Vintages
  - List those for which this measure may apply
- Any applicable CPUC requirements or restrictions?

# Reference Slides

11



# Key Features

12

## Open to 3Ps

Allows Third Parties (3Ps) to propose & develop new & updated measures

## Upfront Measure Screening

By committee of multiple stakeholders

## Early Input

CPUC Consultant & Cal TF

## Standard Template

Standardization increases efficiency & consistency across all measures  
Data dictionary explains each field

## Clear Guidelines

Standardization of QA/QC  
Ensures high-quality, accurate measure analysis & documentation

## Final Review

Cal TF Affirmation  
CPUC Consultant review & approval for all IOU measures

# Measure Screening

13

	3P Measure Request			IOU Initiates & Develops Measure	POU Initiates & Develops Measure
	3P Develops Measure	IOU Develops Measure	POU Develops Measure		
1. 3P Completes & Submits Measure Submission Form	✓	✓	✓		
2. Cal TF Staff Checks Measure Submission Form	✓	✓	✓		
3. Cal TF Staff hosts Monthly Measure Screening Meeting & Measure Screening Committee Makes Pass/No Pass Determination	✓	✓	✓		
4. Cal TF Staff Documents Result of Measure Screening Committee and Communicates to Requester	✓	✓	✓		
5. Cal TF Staff Collaborates with IOUs & POUs to determine Lead Utility	✓	✓	✓		
6. Cal TF Staff Updates Statewide Deemed Measure List (post to Cal TF website)	✓	✓	✓	✓	✓

# Measure Development

14

	3P Measure Request			IOU Initiates & Develops Measure	POU Initiates & Develops Measure
	3P Develops Measure	IOU Develops Measure	POU Develops Measure		
7. Measure Developer Completes Measure Development/Update Plan and Submits to Lead IOU/POU	✓	✓	✓	✓	✓
8. Cal TF Provides Early Feedback	✓	✓	✓	✓	✓
9. EAR Team Provides Early Feedback	✓	✓		✓	
10. IOU, 3P, or POU Develops Measure as per Applicable Established Guidelines	✓	✓	✓	✓	✓

# Measure Review & Submission

	3P Measure Request			IOU Initiates & Develops Measure	POU Initiates & Develops Measure
	3P Develops Measure	IOU Develops Measure	POU Develops Measure		
11. Lead Utility Reviews for Conformance to Deemed Rulebook, EAR Consultant Early Feedback, As Applicable	✓	✓		✓	
12. Cal TF Staff Reviews for Accuracy, Completeness, and Conformance to Style Guide, QA/QC Guidelines, and Cal TF Early Feedback	✓	✓	✓	✓	✓
13. Cal TF Reviews and Affirms	✓	✓	✓	✓	✓
14. Lead Utility (IOU) Prepares Four Ex Ante Tables and Measure Submission Package	✓	✓		✓	
15. Cal TF Staff Conducts Final Review of Measure Submission Package	✓	✓		✓	
16. Lead Utility (IOU) Submits to CPUC for Approval	✓	✓		✓	