

Cal TF Update 2022



CALIFORNIA
TECHNICAL FORUM

JUNE 21, 2022

Agenda

2

- Cal TF Team Introductions ([Annette](#)) – 5 min
- RFQ update ([Arlis](#)) – 5 min
- Cal TF schedule ([Ayad](#)) – 5 min
- eTRM update ([Ayad](#)) – 5 min
- New measure process update ([Ayad](#)) – 10 min
- Custom update ([Arlis](#)) – 20 min
- Next steps ([Annette](#)) – 5 min

Core Cal TF Staff

3



Ayad Al-Shaikh



Arlis Reynolds



Tomas Torres-Garcia



Chau Nguyen



Annette Beitel

RFQ Update

4

- RFQ for new TF Members
 - www.caltf.org/join-the-tf
 - Responses **due June 24**
 - New TF members will join July meeting

- New areas for 2022-2023 include:
 - New measures and new measure types
 - Custom measure development
 - Closer integration with new measures identified through ET and EPIC

TF Member Information Update

5

- TF Member Webpage
 - <http://www.caltf.org/tf-members>
 - Send headshot/bio updates to etrm@futee.biz
- Updates to TF Member Experience
 - Google form to indicate current experience/expertise
 - ✦ <https://forms.gle/CzFNoVYU4sHzabpu7>
 - < 5 minutes to complete
- **Please complete by Thursday, June 30**

Cal TF Schedule for 2022

6

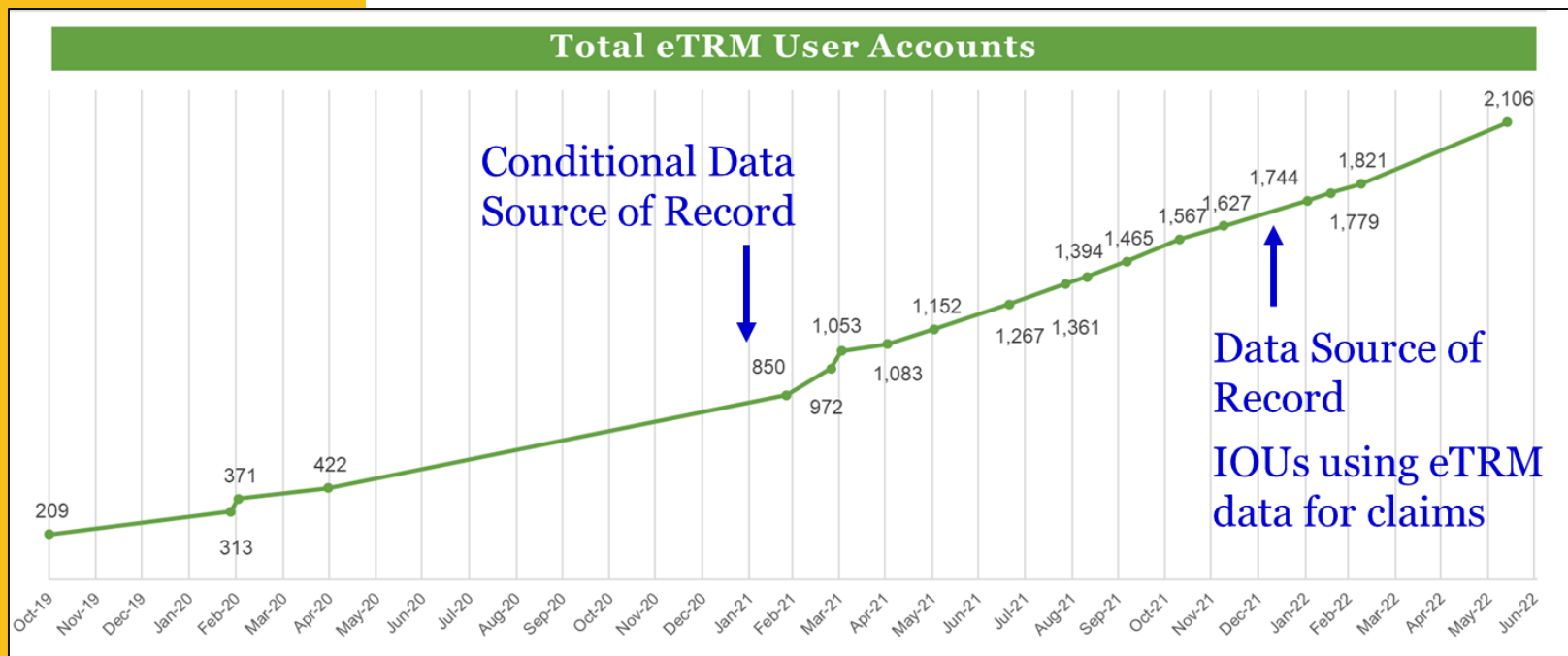
Date	Location
Week of July 25	Online webinar/teleconference
August 25, 2022	Online webinar/teleconference**
September 22, 2022	Online webinar/teleconference**
October 27, 2022	Online webinar/teleconference**
November 17, 2022	Online webinar/teleconference**
December 15, 2022	Online webinar/teleconference**

***May switch to in-person later in 2022*

We want your feedback how the team is feeling about having in-person meetings again

eTRM Update

- July Release and New Features
- Growing User Base



*We want your feedback on training needs and future features!
Contact Ayad or Tomas*

July eTRM Release

- Data
 - Download **PA Implementation Codes** to know which measures are available
- Reports
 - **Measure Package Review Summary**
 - Report displays measure versions that are “Under Review” or have a disposition (“Approved” or “Rejected”)
- Version History Panel
 - **Change description**
 - **Start / End dates**

New Measures

- New Measure Screening Committee
- New Measure Process Status
- New Measure Cal TF Affirmation Approach
 - New and Some Updates

New Measure Screening Committee

13

Voting Members:

- IOUs
 - Henry Liu / PG&E
 - Jay Bhakta / SCE
 - Anders Danryd / SCG
 - Ed Reynoso / SDG&E
- POUs
 - Armen Saiyan / LADWP
 - (open) / SMUD
- CEDMC (*one vote*)
 - Jim Hanna / Energy Solutions
- NAESCO (*one vote*)
 - Mike Casey / Onsite Energy – A Willdan Company (*formerly*)

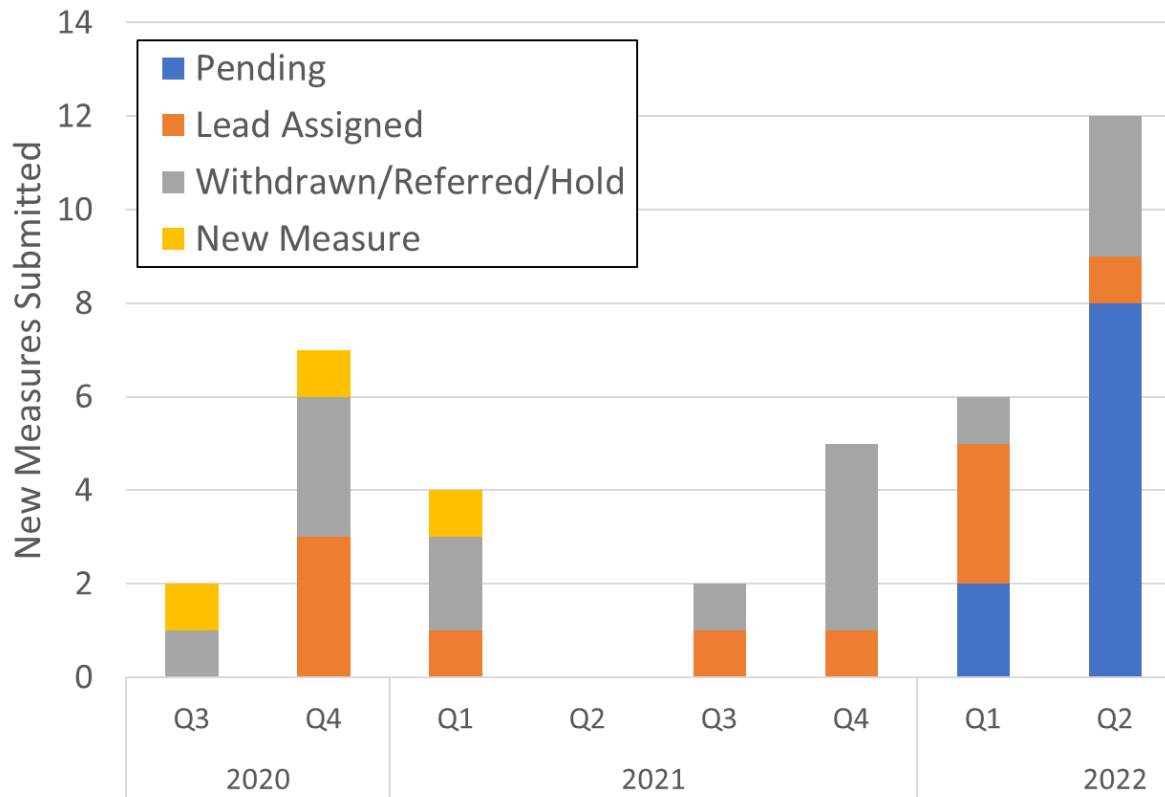
Non-Voting Members

- CEC
 - Yu Hou / CEC
 - Gabriel Taylor / CEC
 - Tiffany Mateo / CEC
- CPUC
 - Staff (*tbd*)
 - EAR Team (*tbd*)
- Independent Advisors
 - As needed
- Cal TF Staff
 - Ayad Al-Shaikh
 - Tomas Torres-Garcia
 - Chau Nguyen

Process Status

14

New Measure Status



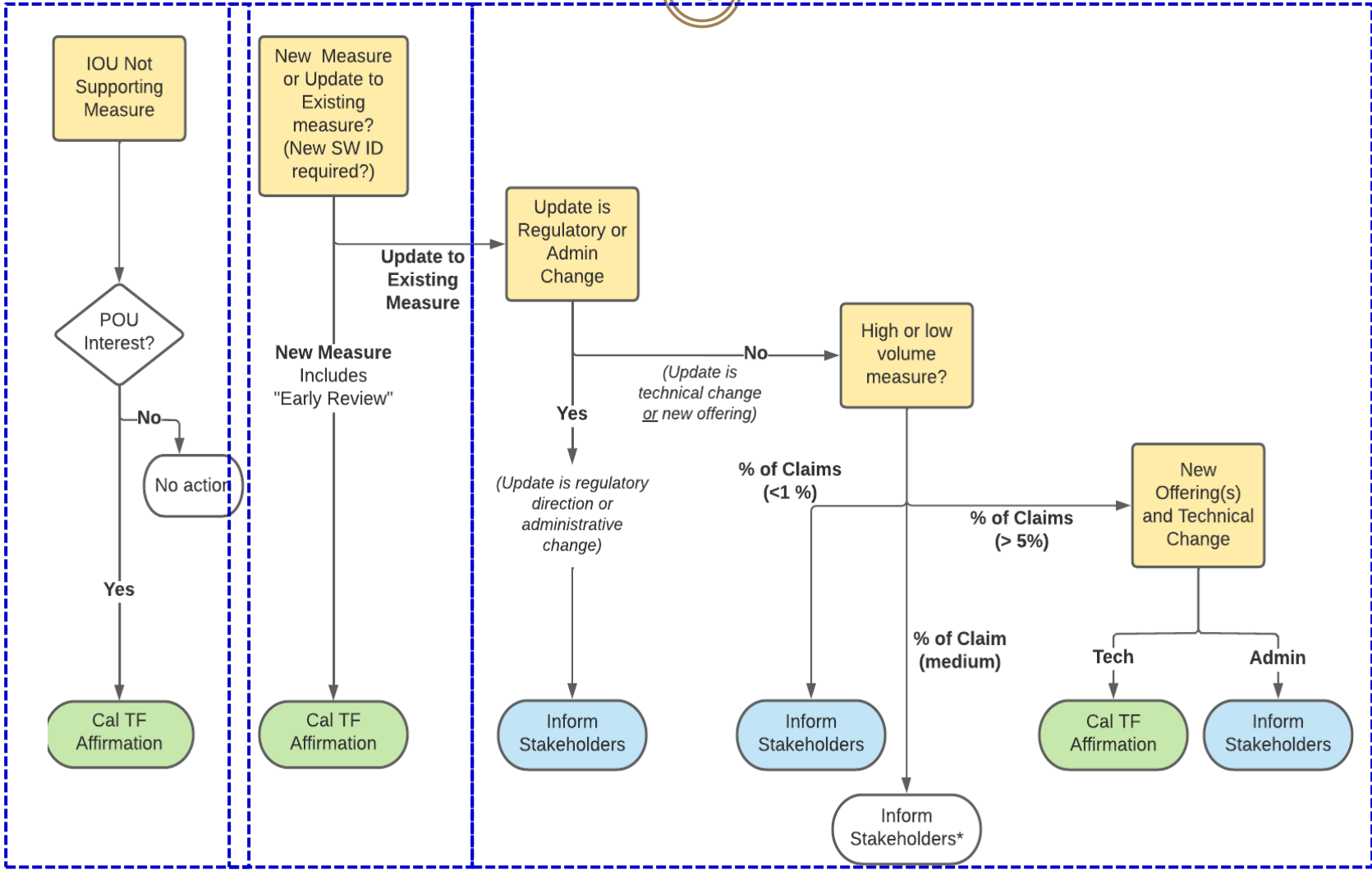
- Number of measures into process increasing
 - Source = 2/3 from implementers
 - Rest from IOUs/Manufacturers
 - Quality varies dramatically
-
- Project list will be posted at Cal TF website
 - Working on hand-off process to PA Lead
 - Will begin “*Early Review & Feedback*” of New Measure ideas with Cal TF Members

Cal TF Affirmation

Keep stakeholders informed through website, eTRM Reports, or eTRM Announcements

- **Cal TF Affirmation**
 - *Objective:* Request Cal TF member affirmation
 - Present pre-synthesized information at Cal TF Monthly meeting or Subcommittee meeting
- **Inform Stakeholders**
 - *Objective:* Keep stakeholders informed
 - Allows stakeholders to identify exceptions (Measures that should be reviewed)

Affirmation Approach



Custom Update

- 2022 Business Plan Goal 5: Continue Development of POU Custom Measures for eTRM
 - Standard methods, tools, and data requirements for “semi-deemed” measures
 - Standard custom measure nomenclature
 - Analysis of how existing eTRM tools could be used to standardize and streamline custom projects
- Project Goals:
 - Reduce costs and time
 - Increase transparency, process efficiency, and consistency
 - Ensure work can be equally used and useful for IOU custom projects – Cal TF value of statewide approaches, to extent possible
 - **More custom projects! More savings from custom!**

Prior POU Custom Project Analysis

18

- Reviewed LADWP “Standard Custom” measures, tools and documentation requirements
- Cal TF Staff memo on value of/approach to incorporating LADWP standard custom measures into eTRM
- Other smaller POUs – few custom projects; limited technical review resources
 - Conclusion
 - ✦ **Project could increase POU custom projects by making process easier and standardized**
 - ✦ Statewide Approach – common nomenclature, standardized tools, calculations and data requirements

Cal TF Staff Analysis To Date

- Reviewed recent analyses and processes used to improve Custom Process and Projects, and to identify ongoing challenges for IOU and 3P Custom Programs
 - CPUC-staff and consultant-led working group efforts to clarify, standardize, streamline custom projects and processes, etc.
 - Resulting Custom Process Review process improvements, including custom templates and guidelines posted on CPUC website
 - SB-1131 timeline requirements
 - 2022 Study of IOU DDR Processes
 - Stakeholders indicate continued desire for improvements
- 5/16 Memo: Leveraging the eTRM for Custom Projects

Leveraging eTRM for Custom

20

Improvement Opportunity Areas

Overarching

Workflow Process

Project Submittal Quality

Benefits

Cost Savings

Time Savings

Transparency

Standardization

Stakeholder
Engagement &
Customer Experience

Outcomes

Reduced stakeholder
frustration

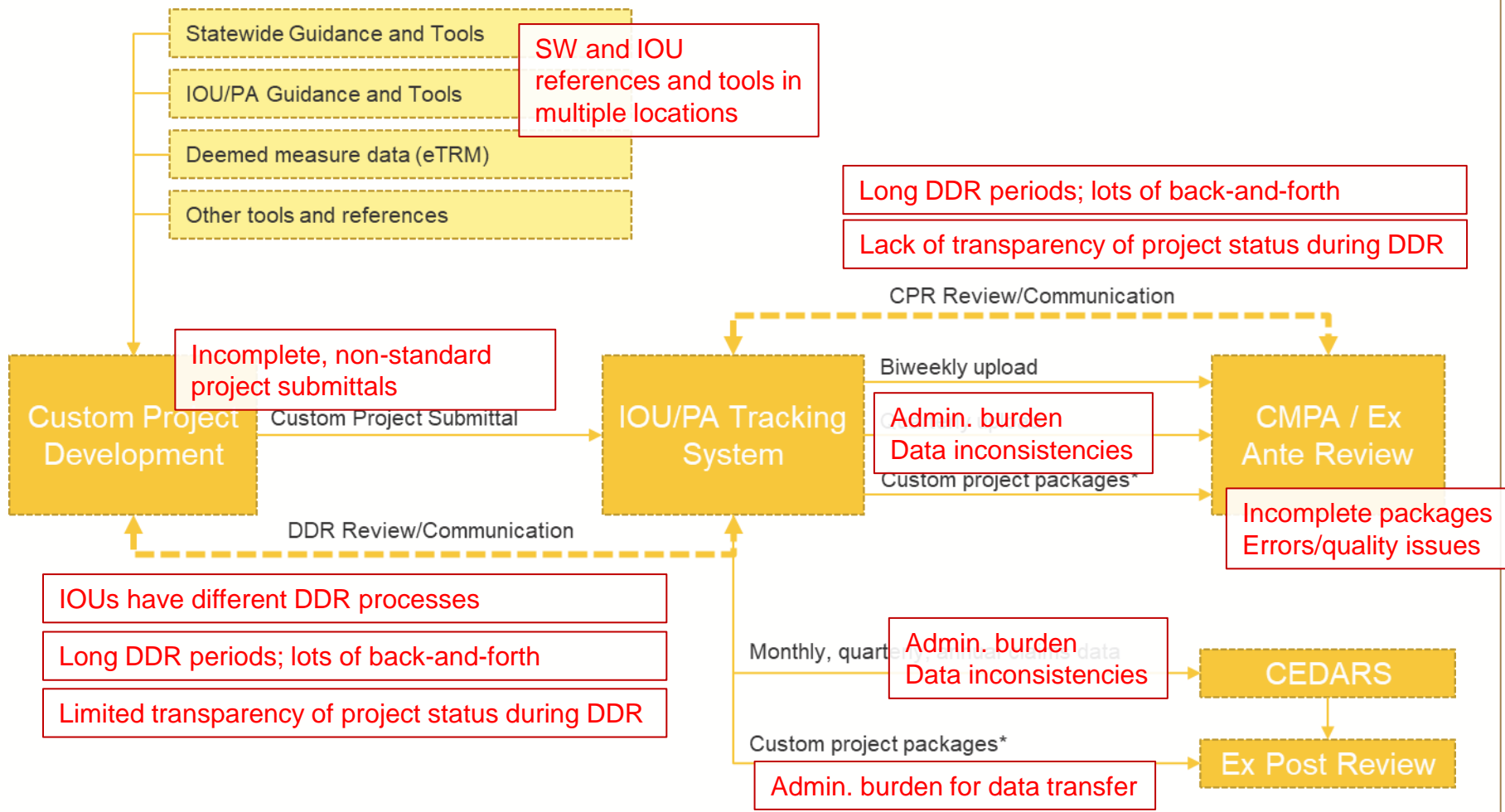
Better project quality

Reduced time/cost for
ex ante and ex post
reviewers

Higher/broader
implementer
participation

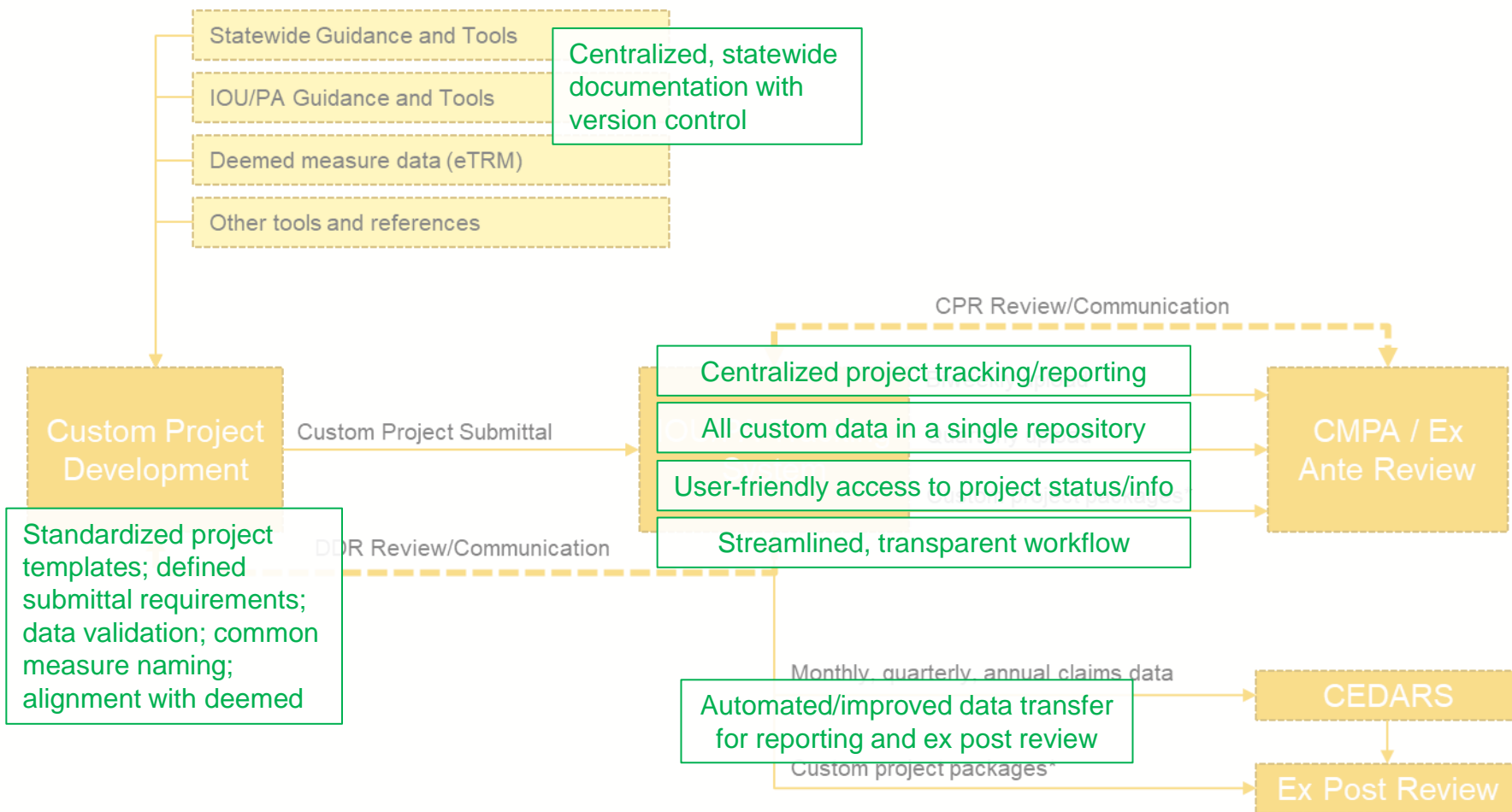
Higher program
throughput and
savings

Leveraging eTRM for Custom Existing Challenges



Leveraging eTRM for Custom eTRM Opportunity

22



Next Steps for Cal TF

23

- Ongoing Stakeholder Input: Continue to solicit input/comment from key stakeholders to develop/refine
 - White Paper(s)
 - Graphical models
 - Identify value and barriers/challenges to moving forward
- Engineering: Collect custom tools/data requirements (IOU/POU). Review/standardize through Cal TF subcommittees
- eTRM Updates: Refine enhancements to eTRM so custom tools can be uploaded, and later possibly customer projects

What tools do you have that can be recommended for Statewide Semi-Deemed measures?

Next Steps

Contact Info:

Ayad.AI-Shaikh@futee.biz

Arlis.Renyolds@futee.biz

Tomas.Torres-Garcia@futee.biz

Chau.Nguyen@futee.biz

- Our next Cal TF Meeting:
Week of July 25th
- Feedback requests:
 - Updates to TF Member Experience (Google form to be sent)
 - How does the team feel about in-person meetings?
 - Additional needs for eTRM training or new enhancements?
 - Get involved with custom analysis