

Cal TF Custom Subcommittee Meeting #13



NOVEMBER 1, 2023

Agenda & Goals

2

- **Meeting Agenda**

- Quick Updates
- ISP White Paper Findings and Recommendations

- **Meeting Goals**

- Stakeholder input on draft recommendations for ISP White Paper

Custom Initiative – Status

3

Metric	Activity/Task	Status Update	Upcoming
5X	Custom Initiative Workplan	Complete (Affirmed by TF, PAC in April)	-
5A-1	Regulatory Summary & Review	Cal TF Staff drafting proposal for improved guidance organization and communication	Discuss at December TF meeting
5A-2	SW Custom Measure ID	Moved to 2024 Business Plan	-
5A-3	List of Measures for SW Custom Measure Packages	Hybrid approach discussed at October meeting; collecting input on potential hybrid measures	Discuss at November TF meeting; affirm prioritization in December TF meeting
5A-4	List of Custom Tools	See updated Tool Library	Affirm prioritization in December TF meeting
5B	Custom Roadmap	Cal TF Staff drafting based on stakeholder input to date	Discuss at November TF meeting
5C-1	SW Measure Characterization	Complete – TF affirmed Steam Boiler, Chiller Systems, HVAC RCx CMPs; others continue into 2024	Stakeholder input on Custom Measure Characterization template
5C-2	Custom MP and Tool Development Workflow	Presented in October TF Meeting; Cal TF drafting final workflow to guide future CMP development	-
5D	eTRM Documentation	-	TBD based on eTRM implementation
5E-1	eTRM Custom Phase 1	Complete (Custom Library scheduled for 2024 Q1)	-
5E-2	Future Custom eTRM Modules	Moved to 2024 Business Plan	-
6B	White Paper: ISP	Discuss findings and recommendations	Draft White Paper (November); TF affirmation in December

10/26 TF Meeting Highlights

4

- 6B ISP White Paper Findings & Recommendations (6B)
 - Continued discussion at this meeting
- Hybrid Measure Approach (5A-3)
 - Confirmed need/value for hybrid measures with streamlined hybrid measure pathway
 - Discuss specific measures at 11/16 TF meeting
- Custom Measure Package Workflow (5C-2)
 - Confirmed approach for future CMP development, review, affirmation
- 5C-1 Custom Measure Packages (5C-1)
 - [PG&E HVAC Tool](#) – TF Affirmed
 - [Chiller Systems](#) – TF Affirmed
 - [HVAC RCx](#) – TF Affirmed
- Details in slides from [10/26 TF Meeting PPT](#)

11/16 TF Meeting Agenda

5

- Thursday, 11/16, 10am – 4:00pm
 - Meeting time may be shortened
- Custom Topics on Agenda (tentative)
 - Draft 2024 Business Plan and 5-year Roadmap
 - Hybrid measure list, input on priorities
 - Custom tool list, input on priorities
 - Decision 23-06-055 Implications (requirement for meter-based approaches)

6B ISP White Paper

- White Paper Objectives
 - Streamline ISP Process
 - Make ISPs accessible, transparent, informative, and up-to-date
 - Proactively identify ISP research needs
 - Support clarifications of ISP Guide and coordination of SP process (E-4939)
 - Identify/develop specific technical and technical policy recommendations
- Activities of [ISP Working Group](#)
 - Data Collection, incl. Stakeholder Survey – **42 completes**
 - Developing recommendations
 - Drafting White Paper
- Today's Discussion
 - Summary of findings
 - **Tiered Baseline**
 - **Baseline Database**
 - **Proactive Research**
 - **Baseline Applicability**
 - **ISP Guidance/Training**
 - Other Baseline Issues

6B ISP White Paper

Draft Recommendations

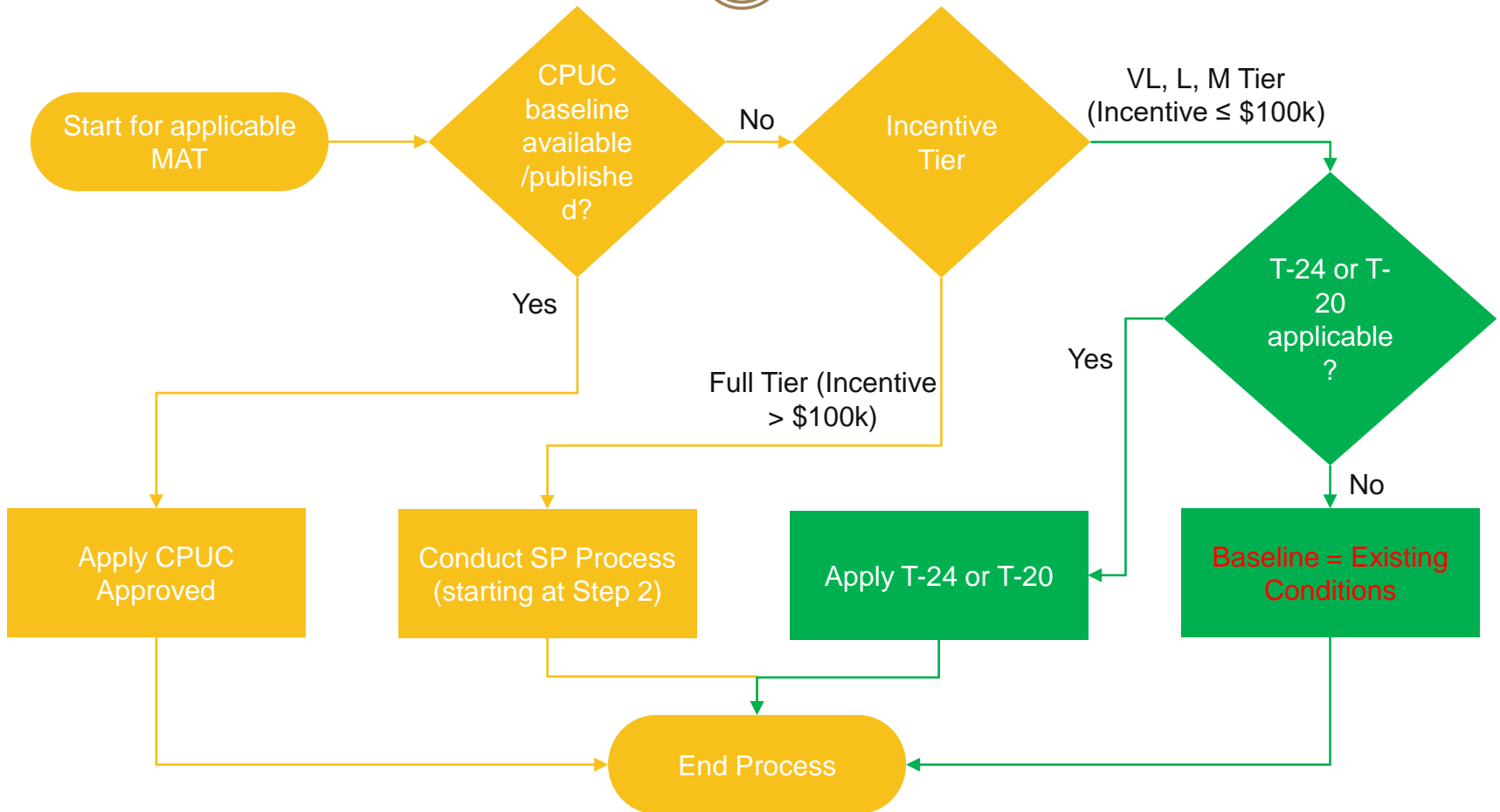
Significant limitations and practical challenges with the existing ISP guidelines and process

- Recommendations for existing rules/process
- Future policy/process considerations

1. **Tiered Baseline** – simplified approach for all but large projects
2. **Baseline Database** – makes existing and proactive baseline research accessible, useful; reduces need for additional informal ISP
3. **Defining applicability** – makes existing baseline data more useful, reliable; guide similarities/differences by geography or market/sector
4. **Proactive Research** – statewide coordination on key baselines; reduces need for additional informal ISP
5. **ISP Guidance/Training** – support statewide understanding, consistency of rules/process
6. **Other Baseline Issues**

Tiered SP: Proposed Process

11



Green – Modification of current process via revised CPUC ISP Guidance Document

- **Survey Feedback**
 - 75% say availability of CPUC-issued baselines is “Not working, needs change”
 - 80% say “Public library of accepted SP baselines that is complete, up-to-date, and searchable” would be “Extremely valuable”
- **Purpose:** Compile approved baselines in a public, searchable database that is easy-to-use, up-to-date, and useful.

Data Sources

Market Based ISP Studies

ISP Study Summary Form →

ISP Study Summary Form →

Informal ISP Studies (CPR-Reviewed)

Modified Disposition Form →

targeted data collection, <5 yrs? →

Informal ISP Studies (PA Approved, no CPR)

TBD →

targeted data collection, <5 yrs? →

Baseline research planned & in progress

Measure w study status & date →

BASELINE DATABASE

Information Fields

Baseline

Measure

MAT

Issue Date

Source

Search Fields (Measure

Approved/Rejected

**Category, Sector, End Use,
Measure Code)**

**“Applicability” (e.g.,
Effective Dates)**

- **Will this database be useful?**
 - If not, why not?
 - What would make it more useful?
- **Should we include informal ISPs approved by PAs, not selected/reviewed for CPR?**
 - If so, how can we efficiently collect this information?
- **Is it valuable to “back-populate” existing baselines?**
 - MB ISP Studies (only if still applicable)
 - CPR-reviewed baselines
 - Non CPR-reviewed baselines
- **How can we incorporate baseline research planned and/or in-progress?**

- **Determining Applicability**
 - Market Based ISP Studies
 - ✦ included as part of study (though can be made more clear)
 - Informal ISP
 - ✦ study/review determines baseline for project; broader applicability not determined.
 - **There is no existing process or framework to define applicability for existing baselines established through informal ISP studies.**
- **Purpose:** Determine how to existing baselines can be used to support current/future measures. (I.e., to what measures, customers, markets, sectors, regions, etc. can an existing standard practice be applied and for how long?)
- **Discuss:** Is it worthwhile to proactively define applicability for baselines from informal ISP studies? How can we do so efficiently, effectively?

Discuss: How can we shape objective, reliable guidelines to define applicability for existing baselines and baseline research – to help stakeholders determine whether an existing baseline is appropriate for their customer/project?

- Effective dates – how long is a baseline / baseline data still valid?
 - Default to 5 years? Shorter or longer based on market?
 - Triggers requiring change – code/law change
- Geography – how broadly does the baseline / baseline data apply?
 - Default to statewide application
- Sector/Market/Customer considerations
 - Markets/Sector – to what other customers, markets, etc. does the baseline apply?
 - Customer size, income considerations
- MAT – Applies for the same MAT
 - Treat NR and AR 2nd baseline the same

Discuss: How do we operationalize determining applicability in an efficient and effective/reliable way?

Proposal for discussion:

- Establish Cal TF Baseline Review Team:
 - Includes Cal TF members, CPUC representative
 - Meet monthly, as needed
 - Determine applicability for each baseline
 - Develop framework over time based on baseline reviews, discussions
 - Also: Sounding board for Qs regarding applicability, informal ISP questions/methods

- **Survey input:**
 - “Proactive research” raised in multiple open-ended additional recommendations
 - Knowledge of CPUC/IOU MB ISP studies in progress – 55% “Extremely Valuable”
 - Desire to eliminate the time/cost/risk impacts of mid-project ISP studies
 - Challenges getting timely responses from market actors to support informal ISP
- **Current State**
 - IOUs typically have a portfolio of ongoing research to support program requirements, including baselines. **This is currently not a transparent process.**
- **Purpose:** Make research portfolio more transparent and useful by identifying baseline gaps/needs and proactively defining baselines to support known EE opportunities.

- **Approach:** Model after statewide new measure screening, measure package development, and Cal TF technical research activities
- **Identify and Prioritize Baseline Gaps/Needs**
 - Cal TF develop intake process for suggested research – ongoing
 - Cal TF facilitate review and prioritization process – quarterly (?)
 - Select studies via TF affirmation? PA Leads? CPUC direction?
- **Conduct Baseline Research**
 - PA (e.g., Measure Package)
 - Contractor (e.g., Measure Package),
 - TF (e.g., White Paper)
 - All studies, baselines reviewed affirmed by TF
 - Submit affirmed studies to CPUC for approval
- **Communicate Baseline Research**
 - Public posting of requested, prioritized, scheduled, in-progress, completed research – maintained up-to-date (e.g., new measure screening)
 - Notifications of status change (in-progress, completed, affirmed, approved) for baseline research

- Will this approach improve awareness, value of proactive baseline research?
- How can we make it more useful?
- Other considerations?

- **Survey Feedback**
 - Clear Guidelines: 24% say “not working” and 61% say “could be improved”
 - “Update, clarify ISP Guidance”: 36% say Extremely valuable and 43% say Valuable
- **Near term: Cal TF support simple, clear, statewide ISP guidance briefings on existing rules/process**
 - Support SW consistency in interpretations
 - Public resource for any/all stakeholders
 - Address stakeholder questions and common points of confusion
- **Future: CPUC Staff plan to update ISP Guidance Document**
- **Cal TF will facilitate stakeholder input to support guidance update**
 - What is not clear? Where are points of confusion?
 - How do we maintain guidance up to date?
 - Incorporate other ISP recommendations as appropriate
 - Develop process for updating and maintaining

- **Survey Input**
 - 70% say “Training on ISP policy and guidance for custom” would be Extremely Valuable or Valuable
- **Existing Training Resources**
 - PG&E Wiki: ISP Process flowcharts, 9-minute video, RP2.0 Protocol
 - **Others?**
- Cal TF can help develop, centralize, make accessible, update (as needed) statewide training material. First, clarify and update guidance.
- **Discuss:** Best way(s) to provide stakeholder training?

Summary of Recommendations

24

- **Baseline DB + Applicability + Proactive Research**
 - Supports development, availability, usefulness of existing baselines
 - Reduces need for additional, informal baseline research
- **Tiered ISP Proposal**
 - Limits informal ISP requirement to large projects
 - Encourages proactive research where ISP is warranted
- **ISP Guidance/Training**
 - Supports stakeholder understanding
 - Supports statewide consistency in guidance interpretation and practice
- **Cal TF Baseline Review Team**
 - Facilitates statewide coordination on baseline research, communication
 - Provides technical support

SP v Influence: “If the project has established influence there should not be a need for ISP.”

Value of effort: “SP is a moving target and requires extensive program resources to evaluate. A more cost-effective approach would be to assume some [FR] through a modified NTGR to mitigate the need for extensive SP research.”

Laggers: Programs should “assist the laggards in the market, but the current policy and guidance are leaving them behind, creating stranded market potential... The current design seems to only support customers on the leading edge.”

Customer reality: “We have many instances where we deal with customers whose realistic alternative is not our ISP and their project drivers and metrics are much different than our programs.”

Customer reality: We should “go with the customer's idea of SP. Each facility operates differently; [it's wrong] to put a blanket standard practice over a measure when each customer's business practice is different.”

Customer reality: “recommend that the customer’s SP has influence on final selection – if no conclusive technology in market is outperforming the other technologies, the customer’s existing nominal technology to be considered SP baseline.

Sector reality: “SP baselines for MF should be specific to those property types. The buildings, systems, and decision-making process for MF buildings is unique and different from SF res., business/com, or sector-agnostic vendor surveys.”

Market engagement: “One of the biggest challenge we faced is finding SMEs for interviews. I wonder if Cal TF can [help make] introductions. Many folks we tried reaching out to in the past tend to ignore small companies like us.”

Prospective ISP. “When ISP was first launched, [ISP] only applied when it was determined that a technology application was well established ... and it appeared that it may now be a standard in the market. In these cases, ... the CPUC would commission a study and the results of that study would be applied after a 6-month grace period.”

Open Question for Consideration

27

- When is SP not the appropriate baseline?
 - When influence is demonstrated (e.g., EE upgrade from existing conditions or code)
 - Market laggards
 - Customers with unique methods, practices, considerations
- When is SP the appropriate baseline?
 - Established technologies/practices demonstrated to be standard/common in market
 - Deemed measures

Next Steps

28

- Cal TF Staff:
 - Draft White Paper
 - Continue outreach to complete ISP Library and baseline database

- TF Members, Custom Stakeholders:
 - Continue to share input/ideas on ISP recommendations
 - Identify/share existing ISP studies to help populate [ISP Studies](#) Library and baseline database
 - Share baseline research in progress

Wrap-Up & Next Steps

- **Action Items**
 - Share existing ISP studies
 - Input on ISP Recommendations
 - **Else?**
- **Upcoming Meetings**
 - 11/7-8 CEDMC Fall Conference (Oakland)
 - 11/16 TF Meeting (Remote)
 - 12/1 Custom Subcommittee meeting
 - 12/15 TF Meeting + EOY Celebration (Los Angeles)

Open Discussion

30

- Invitation for feedback
 - Custom Subcommittee meetings & communications
 - ✦ Frequency, format, materials, discussions, etc.
 - Custom Subcommittee SharePoint
 - ✦ Navigation, access, features, etc.

- Other questions or key issues?