

Cal TF Custom Subcommittee Meeting #12



OCTOBER 4, 2023
ARLIS REYNOLDS
SPENCER LIPP

Agenda & Goals

2

- **Announcements**

- October 26 TF Meeting (Downey) will focus on Custom

- **Meeting Agenda**

- Quick Updates (15 min)
- 5C-2 Cal TF Staff Proposal on CMC and Tool Workflow (15 min)
- 6B ISP White Paper Findings and Recommendations (90 mins)

- **Meeting Goals**

- Stakeholder input on proposed workflow for SW measures and tools
- Stakeholder input on key findings and draft recommendations for ISP White Paper
- Call for stakeholder input on specific policy clarifications and challenges

Custom Initiative – Status

3

Metric	Activity/Task	Status Update	Upcoming
5X	Custom Initiative Workplan	Complete (Affirmed by TF, PAC in April)	-
5A-1	Regulatory Summary & Review	Cal TF Staff drafting proposal for improved guidance organization and communication	Discuss at October TF meeting
5A-2	SW Custom Measure ID	Paused	Paused
5A-3	List of Measures for SW Custom Measure Packages	Cal TF Staff drafting proposal for hybrid measures	Discuss at October TF meeting
5A-4	List of Custom Tools	Cal TF Staff collecting “keep” tools; need PA support to collect tools from CTA	Final tool summary and prioritized list
5B	Custom Roadmap	Cal TF Staff drafting based on stakeholder input to date	Stakeholder input to identify/prioritize needs/efforts for Roadmap
5C-1	SW Measure Characterization	Cal TF Staff preparing drafts for TF review/affirmation in October; other working groups continue to meet	Discuss/affirmation at October TF meeting
5C-2	Custom MP and Tool Development Workflow	Discuss draft proposal	Discuss/affirmation at October TF meeting
5D	eTRM Documentation	-	TBD based on eTRM implementation
5E-1	eTRM Custom Phase 1	Complete (Custom Library scheduled for 2024 Q1)	-
5E-2	Future Custom eTRM Modules	Drafting modules for Disposition Database; CMPA	-
6B	White Paper: ISP	Discuss findings and recommendations	Discuss at October TF meeting Draft White Paper

Quick Updates

Custom Initiative &
Workplan Updates

- 10/26 – Cal TF Meeting, Downey
- Custom Policy/Practice Review
 - Call for examples of challenges, issues, outcomes
- SW Custom Measures/Tools

10/26 TF Meeting

5

- Thursday, 10/26, 10am – 4:30pm
 - 9am special tour of SCG Hydrogen Home
- SoCalGas ERC (Downey, CA)
- Agenda
 - Hybrid Measure Concept
 - ISP White Paper Findings and Recommendations
 - Custom MP and Tool Development Workflow
 - Custom Measure Characterizations (for affirmation)
 - ✦ Chiller Systems
 - ✦ HVAC Retrocommissioning
 - ✦ PG&E HVAC Tool
 - Custom Policy Review

Custom Policy/Practice Review

6

- In progress: Comprehensive policy review related to custom measures/programs
- **Share data/examples of challenges and outcomes for custom measures/projects/programs**
 - Quantitative information describing challenges, “state of custom”
 - Customer, vendor, implementer case studies
- **What policy/guidance/requirement/practice do you want to bring attention to (e.g., question/concern)?**
 - Question/clarification
 - Possible conflict/inconsistency in policy/practice
 - Policy concern (e.g., creates barriers to EE goals)
- Email: arlis.reynolds@futee.biz
- We will share summaries for discussion in 11/1 subcommittee meeting.

SW Measures and Tools

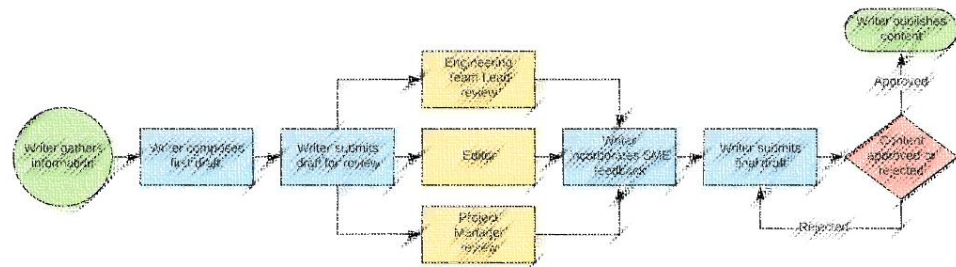
7

- Developed by Subcommittee Working Groups
- Going through Cal TF QC
- Bringing to October TF Meeting for affirmation
- Available on SharePoint for review
 - Steam Boiler (Updated)
 - Chiller Systems
 - HVAC RCx
 - PG&E HVAC Tool

Metric 5C-2

Custom Measure Package and Tool Development and Update Workflow

- **Objective**
 - Formal workflow and process for **developing**, **reviewing**, and **updating** SW Custom Measures and Tools
- **Approach**
 - Adapt deemed MP workflows to custom
 - Seek CPUC buy-in to provide input and review proposed SW custom measures and tools



- **Deliverables**
 - Custom Measure Package Development and Update Workflow, presented to TF for affirmation
 - Assessment of potential to implement approved workflow in eTRM (Paused to 2024)

TF Discussion Questions

9

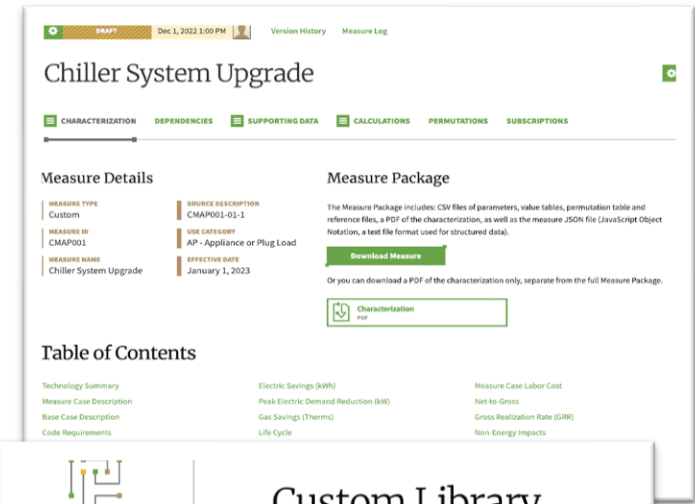
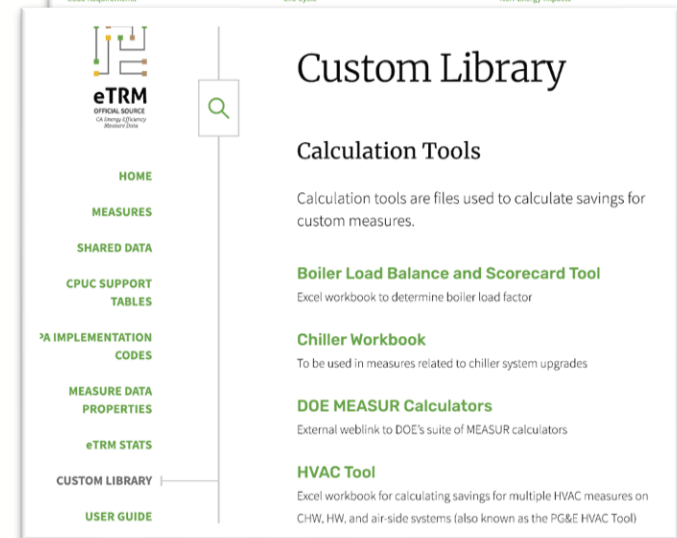


- How do we **develop** SW measures and tools?
- How should we **review** and **approve** SW measures and tools? What earns the “Cal TF Affirmation”?
- How should we **update** measures/tools as needed?

Overarching Goal

10

- Public library of Custom Measures and Custom Tools that are:
 - ❑ Complete
 - ❑ Clear, easy-to-read/understand
 - ❑ Consistent
 - ✦ Format
 - ✦ Development/update process
 - ❑ Well-documented
 - ✦ Include Training materials
 - ✦ Policy/guidance references
 - ✦ Changes/updates/bugs/needed updates
 - ❑ Meet appropriate technical rigor
 - ❑ Maintained up-to-date
 - ❑ Versioned
 - ❑ Reliable (ideally CPUC-approved)
 - ❑ Useful (worth the effort to develop)

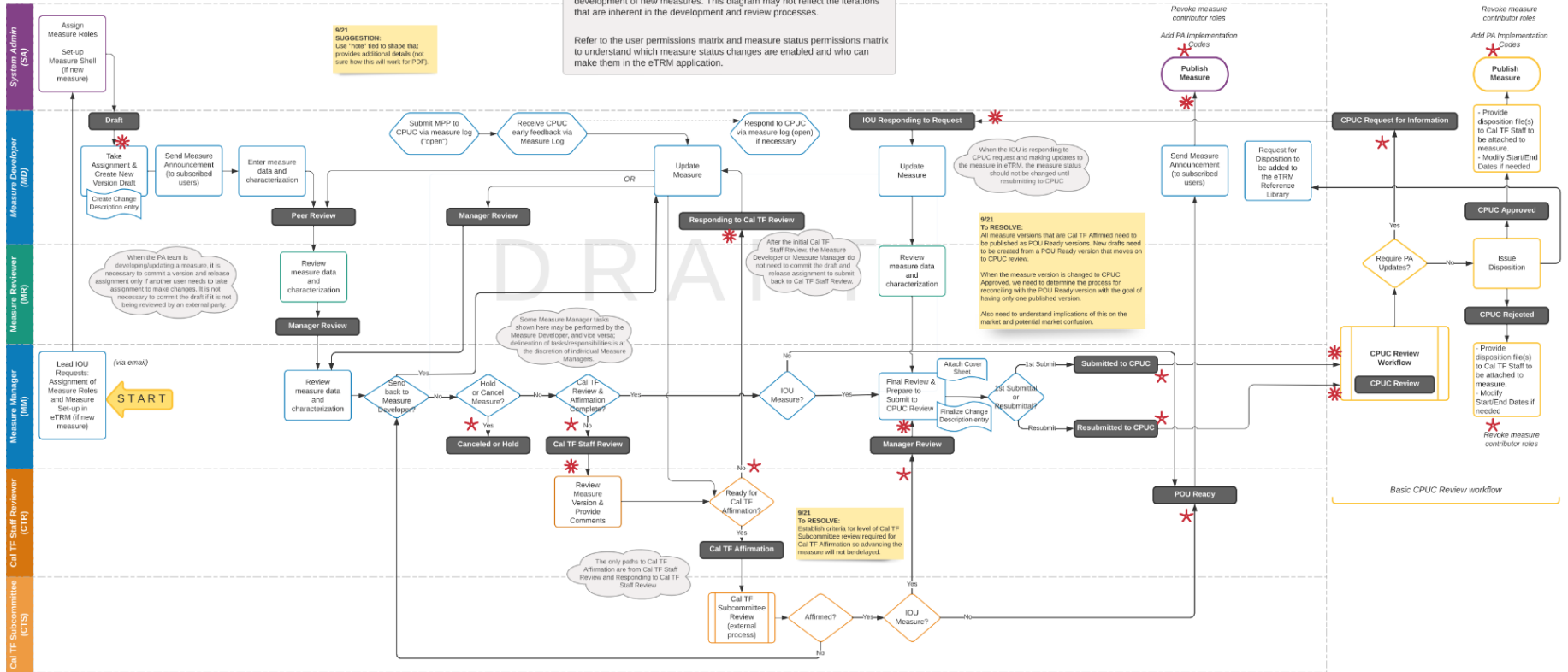



Deemed MP Development

eTRM Workflow: PA Measure Development/Measure Update

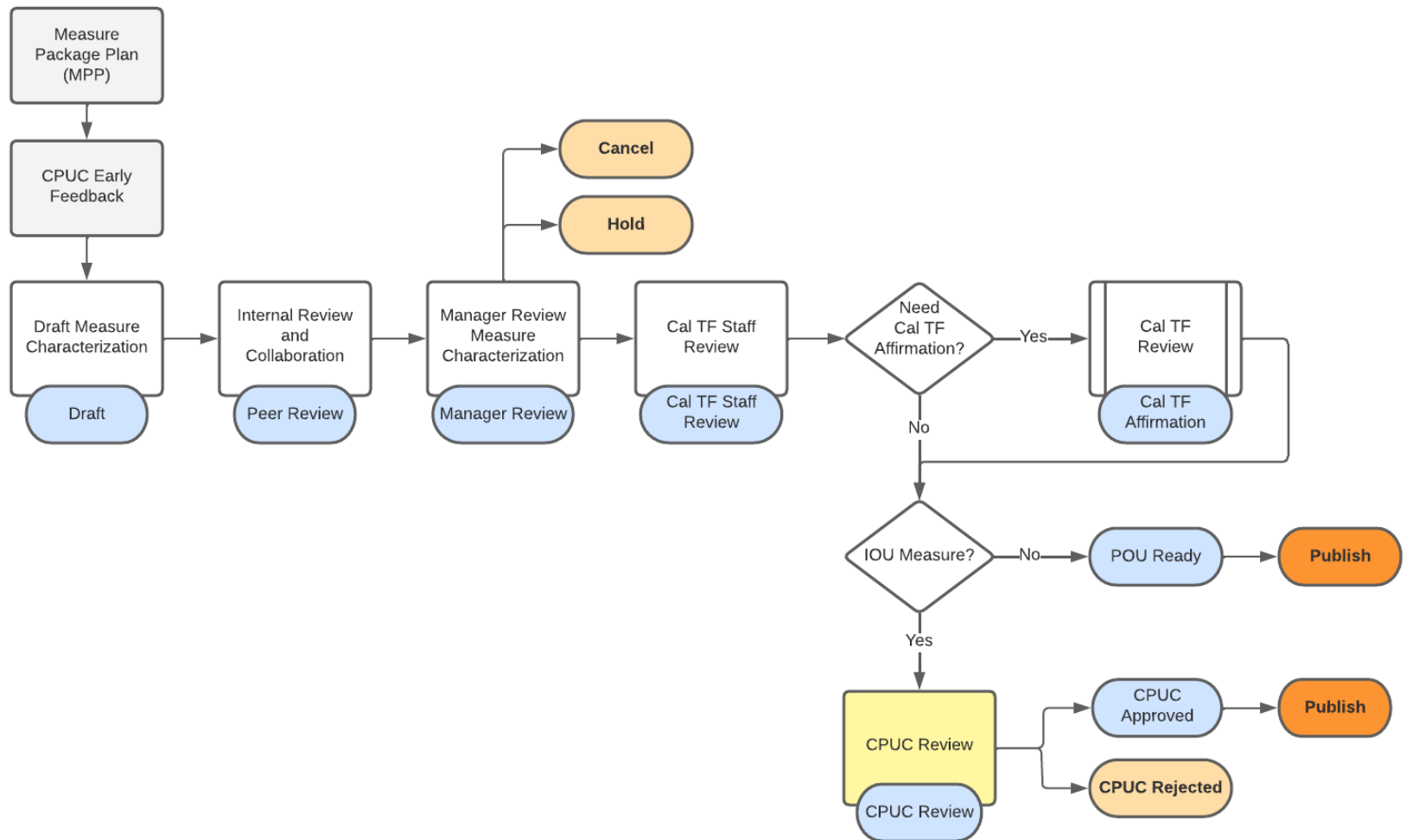
This is a generic workflow that applies to standard measure updates and the development of new measures. This diagram may not reflect the iterations that are inherent in the development and review processes.

Refer to the user permissions matrix and measure status permissions matrix to understand which measure status changes are enabled and who can make them in the eTRM application.



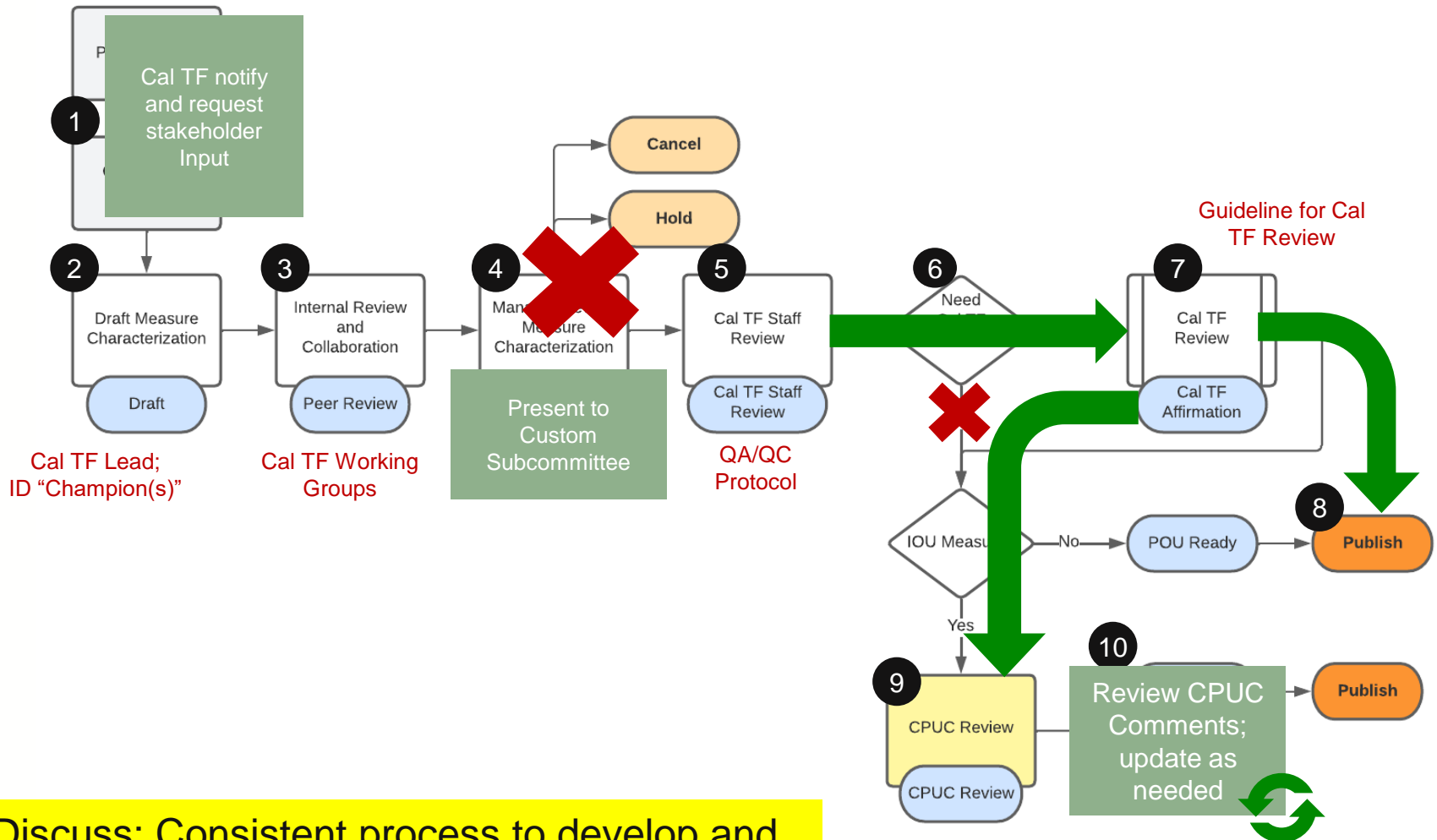
Deemed MP Development, Simplified

12



Adapt Measure Package Development and Review Process for Custom Measures and Tools

13



Discuss: Consistent process to develop and review custom measures and tools

Summary of Key Points

14

Develop

- Cal TF Manage
- No PA Lead/Manager requirement
- ID Stakeholder Champion(s)
- Solicit all stakeholder early input
- Public/transparent development process
- Present to Custom Subcommittee

Review

- Cal TF Manage
- QA/QC Checklist
- **Cal TF Review Guide**
- Require Cal TF Affirmation
- Publish after Cal TF Affirmation
- Seek CPUC Comments

Maintain

- Identify update triggers
- Cal TF annual review of update needs
- Cal TF collect feedback on “bugs” and other requests
- Cal TF Manage update process (or coordinate with tool lead)
- Require Cal TF Affirmation on updates
- Version control, notification, documentation of updates

Other Discussion Points

15

- TBD: Coordinating and Resourcing Tool Updates
 - Stakeholder Tools (i.e., tools owner by CA EE stakeholders)
 - External Tools (i.e., tools owned/managed by DOE, NREL, other external stakeholders)
- **Else?**

Next Steps

16

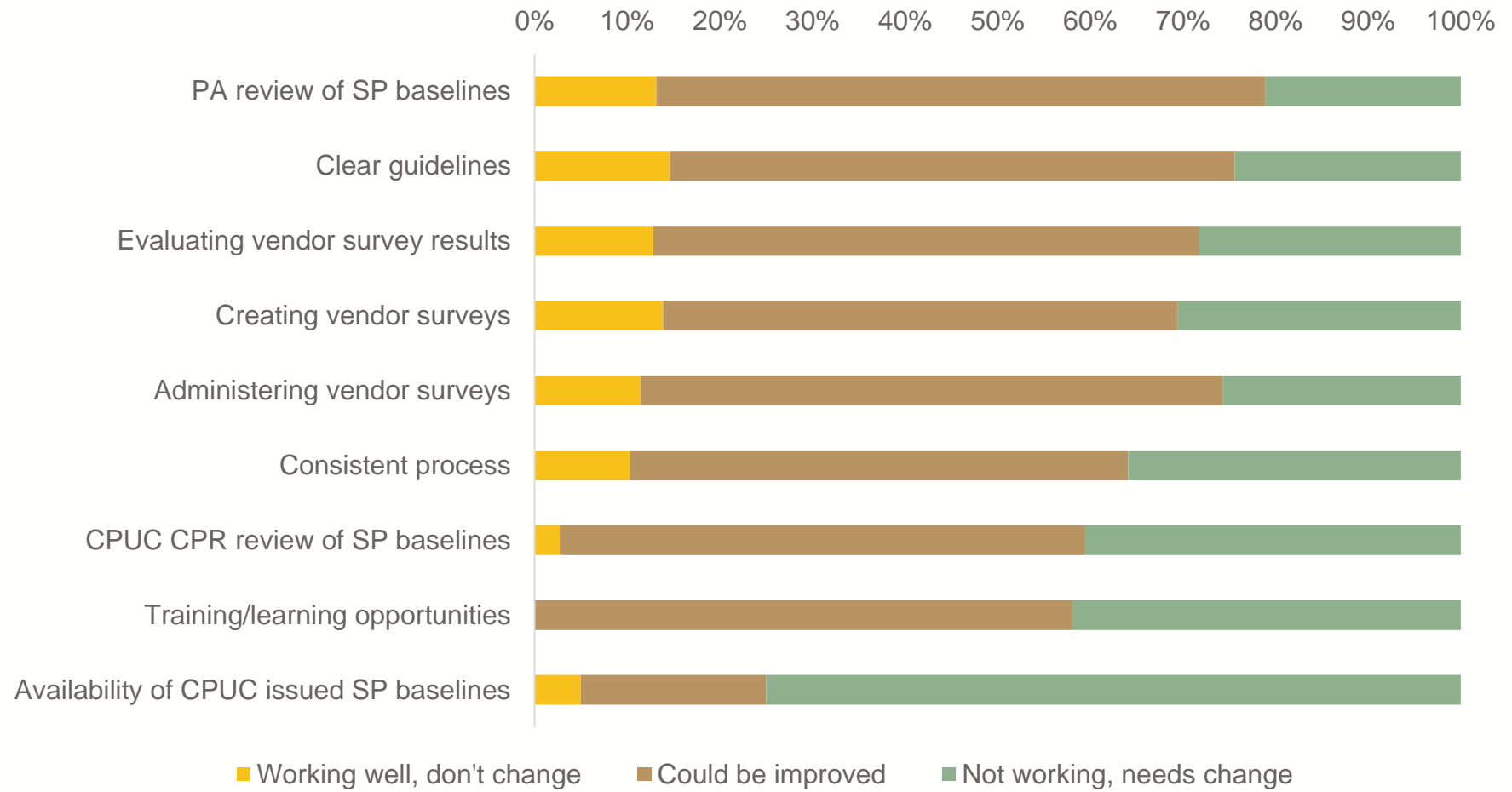
- Cal TF Staff draft formal workflow proposal (1-2 pg) for review/affirmation at 10/26 Cal TF Meeting
- Workflow to guide process for ongoing and 2024 efforts to develop statewide Custom Measure Packages (measure protocols and tools).

6B ISP White Paper

- White Paper Objectives
 - Streamline ISP Process
 - Make ISPs accessible, transparent, informative, and up-to-date
 - Proactively identify ISP research needs
 - Support clarifications of ISP Guide and coordination of SP process (E-4939)
 - Identify/develop specific technical and technical policy recommendations
- Activities
 - [ISP Working Group](#)
 - Data Collection
 - Stakeholder Survey – **42 completes**
 - Drafting White Paper w/recommendations
- Today's Discussion
 - Summary of findings and recommendations
 - **Baseline Database** framework/approach
 - **Tiered Baseline Proposal**
 - **Baseline Applicability**
 - **Proactive Research Proposal**
 - **ISP Guidance/Training** – where are clarifications needed?
 - Discuss **Baseline Policy** – where are conflicts, inconsistencies, barriers happening?

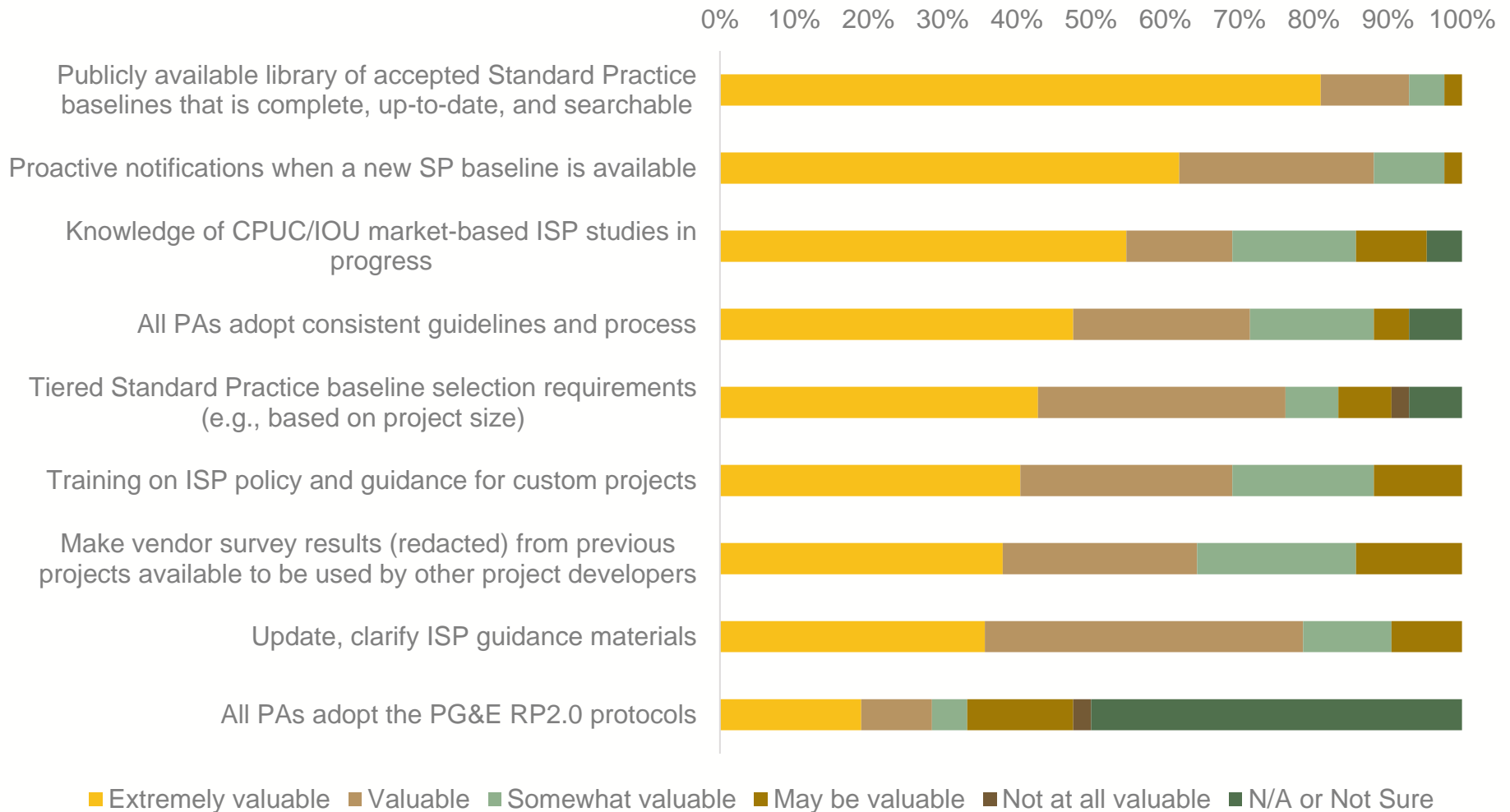
Rating aspects of the current SP baseline selection process

18



Rating potential improvement activities

19



Additional input on improvements (from 9/13 meeting)

20

- Resources
 - Define and make transparent applicability of SP research and baselines
 - Support proactive research of baselines for measures, markets
 - Statewide template to improve consistency in studies and reviews
 - Alternative considerations/approaches for establishing SP baseline (e.g., beyond vendor surveys)
 - Provide sample project scenarios in ISP Guidance
- Process
 - Establish timelines for review SP baselines (outside of CPR)
 - Engage appropriate market/sector expertise for reviews
 - Maintain continuity in assigned reviewers
 - Employ sector-specific considerations for baseline selection process
- Policy
 - Coordinate SP/Code/Influence
 - Prospective application of ISP

Draft Recommendations

- Baseline Database
- Tiered Baseline Proposal
- Defining applicability
- Proactive Research Proposal
- ISP Guidance/Training
 - Where are clarifications needed?
 - Preferred training approaches?
- Baseline Policy/Guidance
 - Where are conflicts, inconsistencies, barriers happening?

Baseline Database

22

Data Sources

Market Based ISP Studies

ISP Study Summary Form

ISP Study Summary Form

Informal ISP Studies (CPR-Reviewed)

Modified Disposition Form

Targeted data collection

Informal ISP Studies (PA Approved, no CPR)

TBD

Targeted data collection

BASELINE DATABASE

Information Fields

Baseline

Measure

MAT

Issue Date

Effective Dates

Source

Search Fields (Measure

Category, Sector, End Use,

Measure Code)

Approved/Rejected

... for completed studies and
baseline research in progress

Tiered ISP: Background

23

- Over 70% of survey respondents indicated tiered ISP process would be Extremely Valuable or Valuable
- Tiered approach used for POE and M&V
- Considerations for proposed tiered process
 - NTG decreasing
 - ✦ 50% NTG in 2024 (Reduced from 60%)
 - Project development cost the same (increasing?)
 - ✦ Baseline determination only one component of project development effort
 - ✦ Others - customer interactions, influence documentation, audit, solutions engineering, M&V, project submittal organization

Tiered ISP: Analysis

24

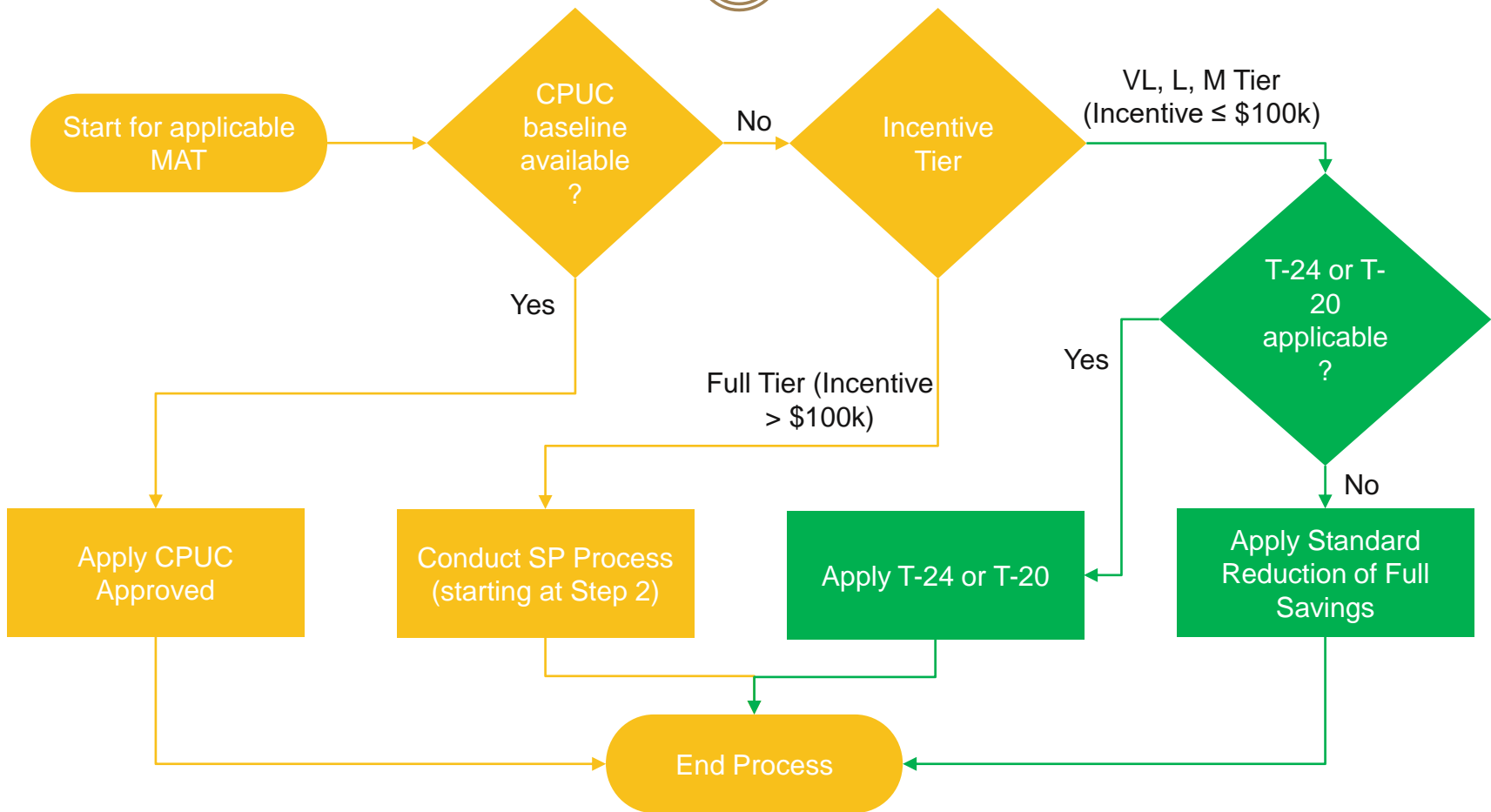
- Cost of conducting an informal ISP
 - From survey, Informal ISP takes 43 hours
 - @\$120/hour = ~\$5,200
 - Informal ISP compliance = 3.58 out of 5 = 72%

	Very Low	Low	Medium	Full
Min Incentive	\$0	\$7,501	\$25,001	\$100,001
Max Incentive	\$7,500	\$25,000	\$100,000	None
AVG Incentive [1]	\$1,253	\$15,065	\$51,515	\$382,576
Full Compliance Informal ISP Cost %	416%	34.6%	10.1%	1.4%
Survey Compliance Informal ISP Cost %	298%	24.8%	7.2%	1.0%

[1] From 3 years of bi-monthly CMPA upload data

Tiered SP: Proposed Process

25



Green – Modification of current process via revised CPUC ISP Guidance Document

Tiered ISP: Discussion

26

- We have proposed a reduced ISP process for Very Low, Low, and Medium tiers.
 - **Is this the right tiers and balance of cost?**
- We have proposed T-24/T-20 or a stipulated % reduction in savings.
 - **Are there any other options for reduced ISP for consideration?**
- Determination of stipulated percent reduction. Claims data and CMPA data is not helpful
 - **Are there other data sources for consideration?**
 - **Absent of data, how should the percent reduction be determined?**

Discuss: Applicability (1 of 2)

27

- **Purpose:** Determine how to existing baselines can be used to support current/future measures/projects. I.e., to what measures, customers, markets, sectors, regions, etc. can an existing standard practice be applied, and for how long?
- Determining Applicability
 - Market Based ISP Studies: included as part of study (though can be made more clear)
 - Informal ISP: study/review determines baseline for project; broader applicability not determined
 - **There is no existing process or framework to define applicability for existing baselines established through informal ISP studies.**
- **Discuss:** Is it worthwhile to proactively define applicability for baselines from informal ISP studies?

Discuss: Applicability (2 of 2)

28

Discuss: Guidelines on to determine applicability for existing baselines:

- Are the baselines (source data) still valid?
 - Default to 5 years? Shorter or longer based on market?
- What triggers/indicators would indicate a need for updated baseline
 - E.g., code change, significantly reduced costs, new technology advancements, etc...
- Do the data apply statewide or regional?
 - Default to yes, unless...
- To what other customers, markets, etc. does the baseline apply?
- Applies for same MAT, and
 - NR and AR (2nd baseline) treated the same?
 - ✦ Not in the MLC

Proactive Research: Current State

29

- IOUs typically have a portfolio of ongoing research to support program requirements, including baselines. This is currently not a transparent process
- Survey input:
 - Knowledge of CPUC/IOU MB ISP studies in progress – 55% “Extremely Valuable”
 - “Proactive research” raised in open-ended additional recommendations
- **ACT:** Please share your research portfolio and contact info for follow-up questions
- **Discuss:** How do we make sure our proactive research portfolio is more transparent and useful?

Proactive Research: Discussion

30

- How do research efforts get added to the list?
 - CalTF develops an intake process for suggested research
- How frequently is the list updated with new topics?
 - CalTF coordinates quarterly (?) review of portfolio of research
- Is there room for input on which ones get funded?
 - Yes, through the research intake review process
- How do the list of research projects and final report/results get transmitted to all who need to know?
 - CalTF mailing list of those interested in the research portfolio(s)
 - CalTF will maintain a website showing status of research

Discuss: ISP Guidance, Training

- Survey Feedback
 - Clear Guidelines: 24% say “not working” and 61% say “could be improved”
 - Update, clarify ISP Guidance: 36% say “Extremely valuable” and 43% say “Valuable”
- **Discuss:** How can the ISP Guidance Document be improved?
 - What “discrepancies, contradictions, or lack of clarity” need to be addresses in next update?
 - Other guidance improvements?

Discuss: ISP Guidance, Training

E-4939 OP #6 Page 47-48

“CPUC staff’s updates to this living document shall be adopted via the following process:

A draft of any proposed updated version shall be provided to the service list of R.13-11-005 or its successor proceeding as well as posted on a publicly available website for comment by stakeholders and the public with a minimum comment period of three weeks;

After consideration of comments received on the proposed updates CPUC staff shall update the proposed version and post a new version of the definition and guidance document which shall supersede the previous version(s).”

Discuss: Guidance update process, schedule

Discuss: ISP Training

33

- **Existing Resources**

- PG&E Wiki page features task flowcharts for custom project development – including graphics on the 3-step Standard Practice Baseline selection process applicable to NR, NC (including CapEx) MAT and 2nd baseline AR MAT.
- PG&E 9-minute video on ISP study and baseline selection. This short training explores when and how to correctly employ an appropriate ISP Study to support baseline selection and navigate through custom project development.
- **Others?**

- **Discuss:** Interest in learning more about the Enhanced PG&E RP2.0 Tool?

- **Discuss:** Best way(s) to provide stakeholder training?

Discuss: Policy Issues

34

- Policy Issues
 - SP vs. Code vs. Influence
 - Prospective application of ISP
- Policy Interpretations
 - Are there examples of conflicting interpretations of policy/guidance?
- Policy v practice
 - Are there areas where practice has diverged from policy?

Next Steps

35

- Cal TF Staff:
 - Outreach to complete ISP Library and baseline database
 - Presentation at October TF Meeting
 - Draft White Paper

- Stakeholders:
 - Share baseline research in progress?
 - Share research portfolio and contact person for follow-up questions regarding proactive baseline research
 - Identify/share existing ISP studies to help populate [ISP Studies](#) Library and baseline database

Wrap-Up & Next Steps

- **Action Items**
 - Share existing ISP studies
 - Input on items discussed today (ISP, workflow, policy issues, custom challenges)

- **Upcoming Meetings**
 - Ongoing – Measure Group meetings
 - 10/26 Cal TF Meeting (Downey)
 - 11/1 Custom Subcommittee meeting
 - 11/7-8 CEDMC Fall Conference (Oakland)

Open Discussion

37

- Invitation for feedback
 - Custom Subcommittee meetings & communications
 - ✦ Frequency, format, materials, discussions, etc.
 - Custom Subcommittee SharePoint
 - ✦ Navigation, access, features, etc.

- Other questions or key issues?